

Shiobara Onsen



Itamuro Onsen



Gourmet・Local product



Discover something new whenever visit
The town that can enjoy
seasonal food



Tochigi Prefecture
Nasushiobara City
Tour Guide book



Tochigi Prefecture
Nasushiobara City
Tour Guide book



Satisfying whenever visit
The town of
great view and healing

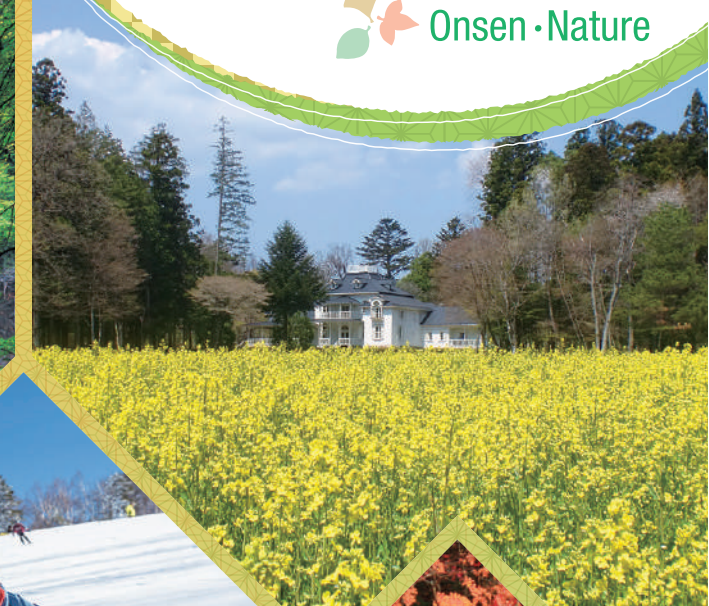
Shiobara Onsen



Itamuro Onsen



Onsen・Nature



Shiobara



Two historic hot springs being loved throughout the ages.



Surrounded by magnificent nature, Shiobara and Itamuro are historic hot springs found during the Heian era. There are full of things to enjoy not only Onsen, but also the scenery of the four seasons, gourmet, and activities. It has been loved for a long time, which is a healing spot you can spend a time being relaxed.

Table of Contents

Shiobara Onsen	P2~4
Itamuro Onsen	P5-6
The beauty of Shiobara's falls and trip to suspension bridge and the falls	P7-8
A walk in the Mother Nature of Itamuro	P8
Scenery and events to enjoy the season	P9-10
Nasushiobara City Tour MAP	P11-12
Activities	P13-14
Kuroiso	P15-16
Nishinasuno	P17-18
Entertainment-Shopping	P19-20
Nasushiobara's famous restaurants	P21-22

~Luxuriously enjoy the magnificent beauty of the falls and a plenty of Onsens~

Shiobara Onsen



Shiobara Onsen where has 11 hot springs in a wide range of 9km east-west and 4km north-south along Hokigawa where has a beauty of the falls in four seasons. It has more than 150 headsprings, which is accounting for a quarter of Tochigi Prefecture and the amount of flows is 10,000 liters/min. In addition, the color and water quality of hot springs vary, so it is also very attractive that there are hydrogen carbonate, sulfate, and sulfur hot springs which are famous for their 'Top3 hot springs for beauty'.



It's fun to choose and enjoy hot springs that fit your skin. Hot springs that can recharge your mind and body in beautiful nature.

History over 1,200years

The start of the Shiobara Onsen is known as A.D. 806, and it has been a place to soothes the mind and body of many travelers for a long time. Due to opening of new Shiobara's road and the maintenance of railways in Meiji era, more writers and nobles visited, and they were also loved by the royal family who stayed Shiobara's royal residence in Taisho era.



Plentiful!

Enjoyable 6 Types of Onsen you can choose ♪

There are 10 kinds of Onsen in Japan, and you can enjoy 6 kinds of Onsen with different effects.

Excellent thermal effect!

Chloride Onsen

The sterilization effect of salt is good for wounds and the beauty!

Shiny skin!

Simple Onsen

Not stimulating, but gentle for skin

Refreshing after a bath!

Hydrogen carbonate Onsen

It's good for skin and make it shiny!

Good for lifestyle-related diseases!

Sulfur Onsen

Aiming at capillary dilatation, improves blood circulation consequently!

Good for wounds!

Sulfate Onsen

Enhance moisture and resilience to make your skin soft!

Recover the beautiful skin!

Acidic Onsen

Effective in treating chronic skin diseases by disinfection and detox!

Highly recommend for women!

Natural Moisturizing Skin Beauty Ingredients

What is Metasilicic acid?

Whitening ingredients that promote the skin's metabolism and make it smooth. It is known to control the ceramide of the skin. Shiobara Onsen contains much of 'elements for skin beauty' because most of Shiobara Onsen include more than 50mg of metasilicic acid and more than 90% of them include more than 100mg of it.

Smooth skin ♪



Jewel box of Onsen Please enjoy 7-color Onsen

The Shiobara Onsen is so colorful that seven colors of hot spring water come out, so it is called the 'Jewel box of Onsen'.



Refresh in Japan's largest foot bath

Shiobara Onsen Yuponosato

Japan's largest 60m-long foot bath is equipped with big and small stones, which can be recharged with acupressure. There is a place where you can drink hot spring water directly, so you can relax your tensed stomach from the inside of your body.

- Opening Hours: 9:00~18:00 ※ Close at 17:00 in winter season
- Days closed: Every Thursday
- Entrance Fee: Adult 200yen Elementary-Middle school student 100yen
- TEL:0287-32-3101

There's a place to drink hot spring water!



The nostalgic secret Matsuri of Shiobara Juichito



Shiobara Onsen Goshikiyu Matsuri

It is a traditional event to thank for Onsen and pray for the prosperity of Shiobara. People dedicate 'Goshikiyu', which came from the headspring of Motoyu, in Shiobarahachimangu and hold a ceremony to divide Onsen.

Highly recommended day-time Onsen



Shiobara Onsen Hananoyu

It is a day-time Onsen facility with Hydrogen Carbonate Hot Spring that you can stop by from morning to late at night. Relax room and powder room are also equipped.

- Opening Hours: 10:00~21:00 ※ Last admission is 20:30
- Days closed: Every Monday
- ※ Closed the following day for public holidays
- Entrance Fee: Middle school student or older 700yen, Elementary school student, 65 years of age or older, disabled 300yen
- TEL:0287-31-1058

Fresh morning with Onsen mist Shiobara Onsen Mist

It's a toner 100% made of the headspring water that mixes 5 hot spring water from Shiobara, where is good for skin. Due to using special nozzles, fine particles can be sprayed even on top of makeup, and you can enjoy Shiobara Onsen at home.

- Contents 80g
- Price 1,200yen (tax not included)
- ※ On sale at Nasushiobara Tour Center, Shiobara Monogatikan, and Ryokans in downtown.

popular in sale



The Story(Monogatari) is begun from the encounter

Shiobara Monogatikan

The complex facility to enjoy the taste of Shiobara and Hokigawa's scenery in four seasons and history. In the reference exhibition hall, you can trace the literary works and footsteps of literary writers particularly in Meiji and Taisho era.

- Opening Hours: 8:30~18:00(open year round)
- Entrance Fee: Free(the reference exhibition hall is paid) ※ the reference exhibition hall 300yen, Elementary-Middle school student, 65 years of age or older, disabled 200yen
- TEL:0287-32-4000(Shiobara Onsen Tourism Association)

There's not only Onsen!
Enjoying the
culture·history

Shiobara Onsen visited by famous writers such as Saito Mokichi, Yamaoka Sohachi and Tanizaki Junichiro.

You can enjoy the historic spot and literature monuments that can feel the atmosphere of that time.



● Ozaki Koyo's literature monument



● Natusme Soseki's literature monument

Many writers visited Shiobara and made a lot of literary works.

There are about 70 literature monuments engraved works on the stone in Shiobara.

Ryuka Falls where
Yosano Kikaku's couple visited



Feel the history engraved on a building Tennonoma Memorial Park

The village people called the Shiobara Imperial residence with love and respect 'Tennonoma', which was used by Tenno in Taisho era and the royal family as a vacation spot. The space of Tenno is being relocated and opened to public as it is when it was constructed.

- Opening Hours: 9:00~17:00 ※ Close at 16:30 in winter season
- Days closed: Every Wednesday ※ Closed the following day for public holidays
- Entrance Fee: Adult 200yen, Elementary-Middle school student, 65 years of age or older, disabled 100yen
- TEL: 0287-32-4037



The best Power Spot in Shiobara

Shiobarahachimangu (Sakasasugi)



There is a National Natural Monument named 'Sakasasugi', which is 1,500 year old tree on the site.



Exploring the history of Shiobara
The cave where Genji took refuge

Historic spot Stalactite cave Genzankutsu



50m long a stalactite grotto caused by volcanic activity. There is also a gallery where you can tour 150 pieces of armor. You can also take a photo with the costumes.

- TEL: 0287-32-2338



You can experience breaking fossils.

Konoha fossils museum



It displays fossils of animal&plant and minerals from about 300,000 years ago discovered in here's stratum.

- TEL: 0287-32-2052

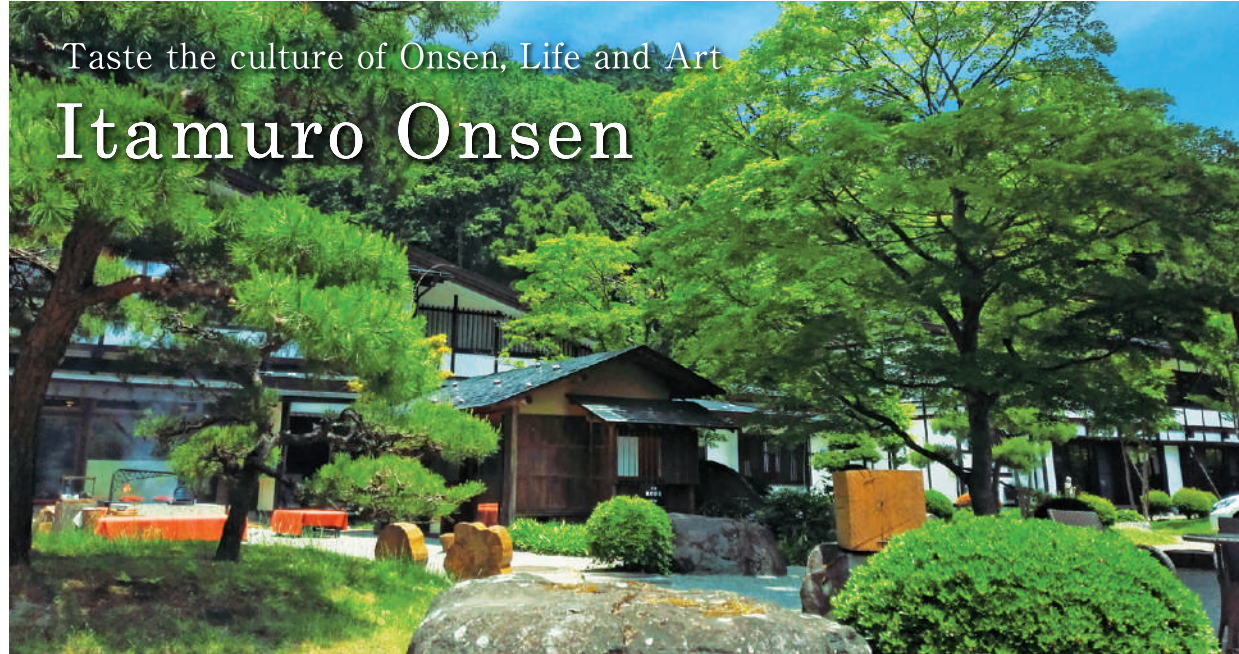


Prefecture-designated
cultural property



Taste the culture of Onsen, Life and Art

Itamuro Onsen



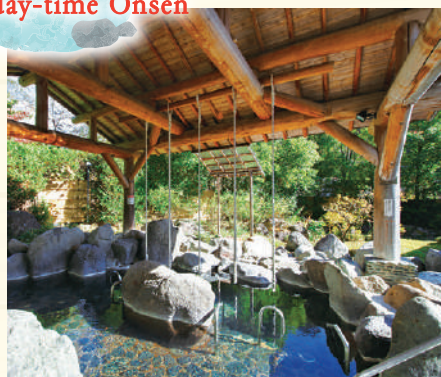
National Registered
Tangible
Cultural Property



Itamuro Onsen's
Traditional Baths Tachiya
Tsunanoyu

It's a unique way of bathing in Itamuro Onsen. Just stand holding a rope and soak yourself in a bathtub. Water pressure works from the chest to the tip of the toes, improving blood circulation to the capillary vessels. It is said to be especially effective for joint pain such as knees and waist.

Highly recommended
day-time Onsen



**Itamuro Genkonoyu
Green Green**

There is a spacious lounge and restaurant, and you can experience Tsunanoyu here.

- Opening Hours:
[April~October] 10:00~19:00
[November~March] 10:00~18:00
- Days Closed: the fourth Wednesday
(Closed the following day for public holidays)
December 31th ~ January 2nd
- Entrance Fee: Adult 500yen
- TEL: 0287-69-0232

Onsen village that has 1,000 year history

Onsen is mainly colorless, transparent, alkaline, simple hot springs with a temperature of about 40 degrees.

It is popular as it is comfortable and enjoyable anytime while warming up in a hypoallergenic moist hot spring.

Due to the sufficient effect as Onsen, it was designated as a 'National Healthcare Onsen Spot' by the Ministry of Environment in 1971.



Okunasu Taishomura Saitonoyu Onsen
● TEL.0287-69-1126

Deep sleep with Onsen mist

Itamuro Onsen Mist

It's a toner 100% made of alkaline simple hot springs' headspring water that are full of skin beauty ingredients and have a silky touch. There are no preservatives or chemicals added. Try it before or after fixing your makeup, and use it for daily moisturizer.

- Contents 80g
- Price 1,200yen(tax not included)
- ※ On sale at Nasushiobara Tour Center, Shiobara Monogatikan, and Ryokans in downtown.

popular
in sale



Itamuro Onsen, which is located in the mountains, is famous for 'Shimotsukeno Yakuto'.

It is a village of Onsen treatment where follows the traditional feeling and culture while harmonizing it with newly built modern Ryokan.



Take a look around the Power Spot!

Three prayers for Itamuro Onsen

There are 3 prayer places for treatment around Itamuro Onsen and each of those has a different target.



Kinomata Jizouson
◆ Prayer for Children



Kagoiwa Shrine
◆ Prayer for the curing of breast cancer
※ It is currently closed due to the earthquake.



Itamuro Onsen Shrine
◆ Prayer for curing arthritis and neuralgia

Japan Breast Cancer Pink Ribbon Campaign

At Itamuro Onsen, there are bath clothes prepared so that those who have undergone breast cancer surgery do not care about the other people around them. So it aims to be a place that cares for women.



Itamuro Onsen ~A pilgrimage to Onsen~

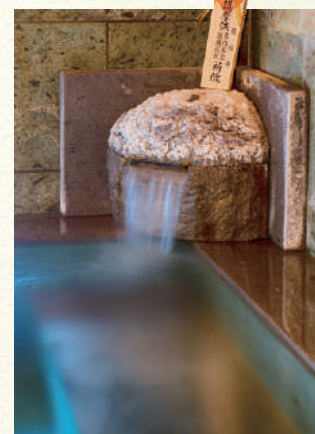
It is said that if Gosatsu from the prayer place is submerged in the bathtub, might be blessed. People offer all of three at 'Three prayers Matsuri'.

Apr-Jun.	Kinomata Jizouson
Jul-Sep.	Kagoiwa Shrine
Oct-Dec.	Itamuro Onsen Shrine
Jan-Mar.	Three prayers for Itamuro Onsen

**The 3 Prayer rituals,
Otakiage**

All of Gosatsu is burned and offered.

- Date: The third of fourth Sunday in April
- Venue: Ground of Nakagawa



The world of Contemporary Art full of individuality

Recently, various contemporary art works have been displayed in Itamuro Onsen.

The warehouse art museum has a permanent display of Suga Kishio's works, so you can feel the charm of it.



Warehouse Art Museum (Appreciation is available only on tours, which operates through reservations)

You can also enjoy five garden installation arts made by Suga Kishio on the tour. ● Opening: 10:00~11:00, Everyday ● Entrance Fee: 500yen per person ● TEL: 0287-69-0226

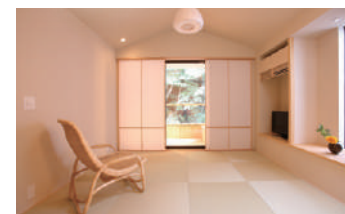
Art Culture



The history of Onsen that has been going on for generations.

There are places prepared indoor clothes or pillows for customers who visit for health care to be relaxed.

That is modern style of Onsen treatment.



There are accommodations where you can choose your pillow!



Mikaeri Falls

It is a waterfall which is 53m head of water, and it is a representative of Shiobara. You can enjoy the beauty of the falls that you can't stop looking back when you stand on the observation deck.

Mikaerinotsuribashi
(the suspension bridge)

Ryuka Falls

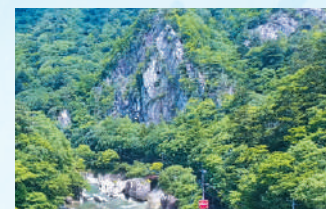
It is the most famous waterfall in Shiobara that reminds you of a dragon as it flows down to three steps. There is a trail to walk, so you can enjoy nature with easy.



Momijidani Big Suspension Bridge

It is a 320m long big suspension bridge that crosses Shiobara Dam. You can see a beautiful waterfalls on the bridge and it is beautiful especially in autumn season.

● Entrance Fee: Adult 300yen,
Elementary・Middle school student, 65 years of age or older, disabled 200yen



Tenguwa

There is a trail where you can enjoy hiking and climb to the top of about 100m.



Senjiniwa Suspension Bridge

It is a 30m long suspension bridge across Kanomatagawa where clear water flows.

Shiobara's beauty of the falls Take a look around the suspension bridge and the falls

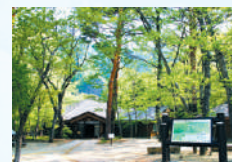
The abundant water of Shiobara flows over the mountains and creates the beauty of the falls. You can enjoy the scenery of four seasons on many suspension bridges.



Onuma Park

The surrounding trails are barrier free, so you can enjoy the nature and the forest bathing. It is also selected as the '100 Forests of Japan Forest bathing'.

Shiobara Onsen Visitor's Center



It guides the nature and a trail of Shiobara.

● Opening Hours: 9:00~16:30
● Days Closed: Every Tuesday
(Closed the following day for public holidays)
● TEL: 0287-32-3050

Nasushiobara's
Tour Video

http://home.nasushiobara.kokosi.net/ja/dc_movie
You can enjoy the main nature walk spot video by scanning QR code on the right.



Ryushun Falls

From the Saruiwa parking lot to Hokigawa falls along the promenade, and then cross the suspension bridge, and you'll find Ryushun Falls.



Strolling the Mother Nature of Itamuro

There are various scenic spots on Itamuro at the western end of the Nasu Renzan Mountain. The scenery of fresh green and autumn leaves near the falls is excellent and you can enjoy playing in the water.

Miyama Dam

It is a mysterious lake full of emerald water and is popular for its beautiful autumn leaves.



Numappara Marshland

It is a marshland at 1,230m above sea level at the western end of the Nasu Renzan Mountain. It has a board-lined promenade, so you can enjoy a variety of flowers in four seasons.



Exbury (mid-June~mid-July)

The ground of Kinomata

You can feel the greatness of nature in the forest where clear water flows and the scenery created by Oiwa stones.



Big Rock Suspension Bridge



Itamuro Nature Study Center



It introduced the nature and history of Itamuro and Okunasu.

● Opening Hours: 10:00~15:00
● Days Closed: the fourth Wednesday
(Closed the following day for public holidays),
December 31st~January 2nd
● TEL: 0287-69-0231



Otomenotaki

The falls flowing like a girl's hair. It shows various faces whenever the season or quantity changes.



Scenery and events to enjoy the season



Pont Kurenai (the red-color suspension bridge)
It is a view point for autumn leaves whose name is derived from the red color of autumn leaves beside the river.

Spring

Peony Myounji-Temple



It is a temple of Rinzaishu myoushinji, which is a famous place for over 3,000 peonies every May.



Itamuro Onsen Koinobori's Swimming

It's a natural poetry of Spring in Itamuro Onsen where a number of Koinobori swim across Nakagawa.

Summer

Sunflower Michino Eki Meijinomori Kuroiso

Great collaboration between Sunflower field and Aoki's villa! There is a trail in the flower garden.



Kawasakidaishi Apotropaism Acala Festival

The procession departs from Shiobara Monogatari and moves toward the sacred place at top of Mt.Fuji(Sumaki Fuji) in Shiobara Onsen.



Yuri Park Hunter Mountain Shiobara

With Yuri park in summer, autumn leaves in autumn, and ski resort in winter, you can enjoy four seasons.

Autumn leaves Gondola Hunter Mountain Shiobara



Head to the top of the mountain at 1,600m above sea level while enjoying the autumn leaves in front of you.

Nasuno Makikari Matsuri

This festival is held with the motif of Nasuno Makikari including 'Nabe' dishes.



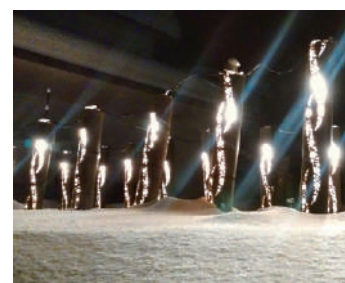
Hanging radish

It's a natural poetry of autumn hanging the radishes of the Shiobara Highlands among the street lamps with bridge's rails!



Shiobara Onsen Taketorimonogatari

A row of bamboo lanterns lights up in Onsen village and it's fantastic.



Nasu Garden Outlet Winter Illumination

Illuminations, the image of a light's concert, embroider Nasu Garden Outlet.



Winter

Enjoy Onsen in Shiobara and see Hina doll

The Shiobara Onsen is decorated with Hinamatsuri dolls.



Sa i j i k i

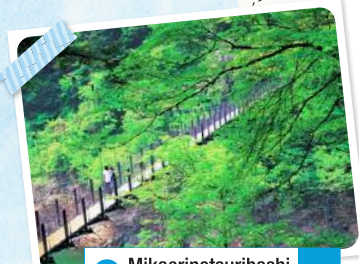
Apr.	Kuroiso Sakura Festival (early to mid April)
	Itamuro Onsen's Three prayers Matsuri Otakiage (the third or fourth Sunday in April)
	Itamuro Onsen Koinobori's Swimming (mid April to late May)
	Kinomata Jizousairei (April 24th)
May	Shiobara Onsen Botan Matsuri (early to late May)
	Shiobara Onsen Yukemuri Marathon (mid May)
	Nishinasuno Hana Festival (mid May)
Jul.	Natural firefly Viewing Event (early to late July)
	Kawasakidaishi Apotropaism Acala Festival (July 28th)
	Nishinasuno Fureai Matsuri (July)
	Catch rainbow trout (late July to late August)
Aug.	Kagoiwa Shrine Worship Ceremony (August 8th)
	Nasuno Furusato Fireworks (August Every other year)
Sep.	Nogi Shrine Grand Festival (September)
	Shiobara Onsen Matsuri (Second Monday of September and the day before)
	Shiobara Onsen Koshikiyu Matsuri (late September)
Oct.	Itamuro Onsen Shrine Worship Ceremony (October 8th)
	Nishinasuno Industrial Culture Festival (Third Saturday&Sunday in October)
	Nasuno Makikari Matsuri (the fourth Sunday and the day before in October)
Nov.	Daikon Burasage (Hanging radish) (early November)
	Nasushiobara Half Marathon (November 3rd)
	Nasu Garden Outlet Winter Illumination (November-February)
Jan.	Nishinasuno Flower Market (January 11th)
	Shiobara Onsen Taketorimonogatari (around January-March)
	Itamuro Onsen's Three prayers Matsuri (January-March)
	Kuroiso Hatsuichi (mid January)
Feb.	Shiobara Nonbiri Yukkuri Hinameguri (Enjoy Onsen in Shiobara and see Hina doll, early February-late March)



A Hunter Mountain Shiobara P13



B Shiobara Onsen
Taketorimonogatari P9



C Mikaerinosuribashi
(the suspension bridge) P7



D Senbonmatsu Farm P14·17·19·21



E Nogi Shrine P17

Nasushiobara City Tour MAP

Shiobara Onsen

Itamuro Onsen

F Sandogoya Onsen



Hidden Onsen in Okunasu only be reached on foot



G SHOZO Street P15



H Nasu Garden Outlet P20

Onsen, Scenary, Activities...
Let's take a look around the attractive area!

Kuroiso

Access

By Train

Tokyo Station	JR Tohoku Shinkansen	Nasushiobara Station
	About 70 minutes	
Nasushiobara Station	JR Bus	Shiobara Onsen
	68 minutes	
	Get off at Shiobara Onsen Bus Terminal	
Nasushiobara Station	Kanto Car (the old name is Touya Bus)	Itamuro Onsen
	50 minutes	
	Get off at Itamuro Onsen	
Nasushiobara Station	JR Utsunomiya Line	Nishinasuno Station
	About 6 minutes	
Nishinasuno Station	JR Bus	Shiobara Onsen
	45 minutes	
Nasushiobara Station	JR Utsunomiya Line	Kuroiso Station
	About 6 minutes	
Kuroiso Station	Kanto Car (the old name is Touya Bus)	Itamuro Onsen
	35 minutes	
Asakusa Station	Tobu Line	Kamimiyori shiobaraonsenguchi Station
	About 3 hours	
Kamimiyori shiobaraonsenguchi Station	Yu-Bus	Shiobara Onsen
	About 25 minutes	
	Get off at Shiobara Onsen Bus Terminal	

By Car

From Tokyo

Urawa I.C.	Tohoku Driveway	Nishinasunoshiobara I.C.
	About 1 hour and a half	

From Sendai

Sendaimiyagi I.C.	Tohoku Driveway	Kuroisoitamura I.C.
	About 2 hours	

How to get to each facility is Here!

There is also a guide with easy route.

Kokosil Nasushiobara

You can check the information and routes of tourist attractions, accommodations, restaurants, etc. in the city on your Smartphone. Download it now!



Tourist coupon book convenient for trip to Nasu

O-MO-TE-Nasutegata

Trip to 7 spots of Onsen are included in the coupon book, so don't miss it during your trip to Nasu!
It is full of special offers and tourist information, furthermore it includes a convenient large-scale map.

●Price 1,000yen (tax not included)



Contact Us

(Corporation)
Nasushiobara City Tour Center
〒329-2801 Sekiya 448-4 Nasushiobara City, Tochigi Prefecture

TEL: 0287-46-5326
<http://nasushiobara-kanko.jp/english/>

※The photos and illustrations in this guidebook are all images.
※The maps listed in this guidebook are all rough maps.



The MAP of JAPAN

Activities

The city of Nasushiobara is full of experience and play using nature. Let's challenge various activities♪

It's OK if you are a beginner. You can enjoy the beautiful scenery comfortably on the lake.♪



Shiobara **mizudori**
●TEL.090-1900-0774 (representative)

Shower Climbing



A thrilling river sport that slides in and out of the waterfall!

Omuche Outdoor & Sports CLUB
It's the headwaters of the Nakagawa. As the river's water has excellent transparency, so you can enjoy playing in the water.
●TEL.0287-47-4267

Canoe・Kayak

They use a stable recreational kayak, and it is a lake where water is still, so even those who use canoe for the first time can participate without fear.

Itamuro **Nature Planet**
(Canoe, Kayak, SUP)
●TEL.0287-69-1168 or 080-6678-1117



Golf

Rounding up delightfully surrounded by nature!



Shiobara **Shiobara Country Club** ●TEL.0287-35-2211

Nishinasuno **Hourai Country Club**
●TEL.0287-37-4114
Nishinasuno Country Club
●TEL.0287-37-8111

Kuroiso **Nasu Country Club** ●TEL.0287-62-0840

Paragliding

Look at the Mother Nature of Nasunogahara!



Kuroiso **KPS Nasu Highlands Paragliding School**
You can enjoy the sky freely from 'experience course' to 'single flight'.
●TEL.0287-76-4740

Bicycle

Feeling good breeze at the Highlands!



Shiobara **Hakonomori Play Park**
It is a park where has a bicycle square and the family can enjoy activities.
●TEL.0287-32-3018

Ski, Snow board

Downhill total length of 3,000m!



Shiobara **Hunter Mountain Shiobara**
Hunter Mountain Shiobara is the largest winter sports area in the metropolitan area with a maximum taxing distance of 3,000m. There are 12 courses where you can enjoy downhill, in addition there is a Kids Park where children can enjoy the snow.
●TEL.0287-32-4580

Snow sled

Kids Park that children can enjoy safely!♪

Fishing

Luciola lateralis and lightning bugs which are not common in Japan are dancing (early July-end of July)



Trekking & Hiking

Feel the magnificent nature with your skin!



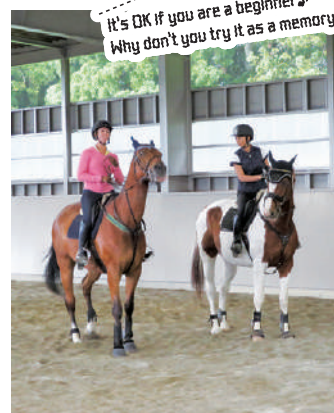
Shiobara **Shiobara Onsen Visitor's Center**
The events such as autumn leaves walk and snow shoes are held!
●TEL.0287-32-3050



Itamuro **Moora Beat**
They offer a walking tour in Numappara marshland and Kinomata Valley where various plants are growing.
●TEL.090-7194-2960
●Reservation reception time: 8:30~17:30
※The phone connection can be unstable because the radio is out of contact.



It's OK if you are a beginner! Why don't you try it as a memory?!



Horseback riding

Kuroiso **Nasushiobara City Horse Garden**
You can enjoy horseback riding at indoor riding course regardless of the climate.
●TEL.080-2100-1515 (reservations only)
Nasu Training Farm
A membership riding club
There is a horseback riding competition once a month, and there is also a try course.
●TEL.0287-62-5188

Nishinasuno **Senbonmatsu Farm**
●TEL.0287-36-1025



You can feel the pleasure of eating caught fishes on the spot.!

Itamuro **Nasu Fish Land**
Everyone such as children, beginners and seniors can enjoy a mountain steam fishing. You can rent fishing rods, buy bait, and cook yourself, so it's OK if you visit with nothing!
●TEL.0287-69-0009

Shiobara **Miharashidai Paid Fishing Area**
●TEL.0287-32-3876
Miyajima Paid Fishing Area
●TEL.0287-32-2869

How about following the Park Conductor who guides you and taking a walk to the forest?



Camp

There are camp site in every area where you can enjoy nature.!



Shiobara **Shiobara Green Village**
Surrounded by nature's greenery, it is a user-friendly auto camp site equipped a kitchen in each area. ●TEL.0287-32-2751
Hakonomori Play Park ●TEL.0287-32-3018

Kuroiso **Torinome Kasen Koen Auto Camping Ground** ●TEL.0287-64-4334
Nishinasuno **Nasunogahara Koen Auto Camping Ground** ●TEL.0287-36-5588

Gateway to Nasu Highlands with retro and modern atmosphere

Kuroiso



It's a popular area with increasing number of cafes and shops using empty stores on retro streets!

We recommend the strolling near ART369.

About 10 minutes' walk from the street nearby the station.

There are many buildings and great shops that have been revived through renovation around SHOZO cafe.

SHOZO

Street

1988 CAFÉ SHOZO

A retro cafe with a comfortable atmosphere that led the trend of cafes.

● Day closed/Irregular ● TEL.0287-63-9833



Chus

There are farmer's market and restaurants that sell local vegetables and processed goods.

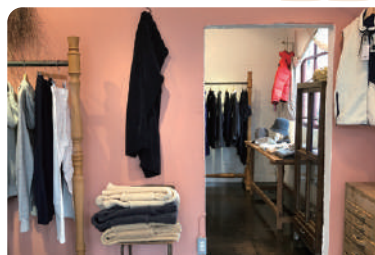
● Day closed/2nd Thursday ● TEL.0287-74-5156



ROOMS

A store that sells vintage items from Europe and India and Japanese antiques.

● Day closed/Irregular ● TEL.0287-64-5650



LUNETTES

It's a store selling clothes and hiking tools. They are producing and selling the original brand.

● Day closed/Irregular ● TEL.0287-74-2405



Eye-catching redevelopment area!

Gourmet restaurant near Kuroiso Station

National Registered Tangible Cultural Property

Café De Grandboi

A stone-built cafe with a stately atmosphere that was used to the bank in Taisho era. The big retro grandfather clock is impressive!

● TEL.0287-64-2330



Gappo Ishiyama

You can enjoy the famous 'Makigarinabe' in Irorinoheya.

● TEL.0287-62-0128



First of all, GET the information here!



OPEN in July of 2019

Nasushiobara City Center 'Kururu'



You can rent a bicycle that is convenient for sightseeing around the city. Take a break at the cafe when you are tired. ● TEL.0287-73-5597

Kuroiso Shrine

The picturesque shrine beloved by locals. The 'Chinowakuguri' held every July is crowded with many visitors.

● TEL.0287-62-0232



National Designated Important Cultural Property

The old Aoki Family's Nasu Villa

The German-style house was built by Aoki Shuzo who served as the Minister of Foreign Affairs and the Minister of Foreign Affairs.

It is displayed the history of pioneering and materials.

● Opening Hours: 9:00~17:30 (close at 16:30 in October-March)

● Days Closed: Every Monday (Closed the following day for public holidays), December 29th-January 3rd

● Entrance Fee/Adult 200yen, Elementary-Middle school student 100yen, disabled for free (booklet for the physically handicapped is required)

● TEL.0287-63-0399



What is ART369?

It is a nickname named after Itamuro highway (369 line of local road) which runs from Kuroiso Station to Itamuro Onsen.

It is named after milk (Milk 369) which is the specialty of Nasushiobara City.

Apart from various art attractions, you can enjoy history, culture, and food!



N's YARD

The Art facility to display works including the latest by artist Yoshimoto Nara.

● Days Closed/Every Tuesday and Wednesday ※ Winter season is closed from mid-December to late-March every year ● TEL.0287-73-5711



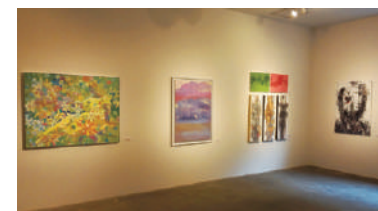
Tea house KAEN

They offer Japanese sweets such as Dorayaki and rice cakes made by themselves.

● Days Closed: Every Wednesday ● TEL.0287-74-6479



Dynamic outdoor sculpture with the motif of fir trees. Miss Forest/ Thinker © YOSHITOMO NARA 2017



Gallery ○△□

They also rent places to artists. (Consultation is required)



Kitakaze To Taiyo

A restaurant cafe that renovated the old Toda Elementary School building as a job support center for the disabled. They are also running a gallery.

● Days Closed: Every Wednesday ● TEL.0287-73-8700

Near Kuroiso Park



Kuroiso Park

Hanami Spot famous for viewing cherry blossoms. Kuroiso Sakura Matsuri, which has been held around mid-April in every year, attracts many people from outside the city.



Nakagawa Riverside Park

There is a Japanese style garden and a square nearby Ooike, and various plants bloom by the season in the aquatic botanical garden.



Nishinasuno

where can retrace the steps to modernization in Japan.

The Heritage of Japan 'which is left Meiji's afterglow.

National Registered
Tangible Cultural
Property

Nasunogahara was a water-poor field long time ago, but
which was eager to build a modern country, paid attention
The house of Meiji's noblemen's in various places offer a
noblemen who led the dawning of modern Japan.

The history of this land was
designated as a Heritage of
Japan in 2018.

the government,
to it and began to pioneer it.
trace of the



History of Meiji's Pioneering, the dream of a large-scale farm~

The farms pioneered by Kazoku had a role of promoting their productivity of the fields, also had aspects of coming true their yearning for European nobles.
They played a role in the center of politics while managing a farm and spending a noble time in a villa on holidays.
The landscape that
Kazoku dreamed of may
have been on this land.

The Heritage of Japan 'The future that the
Meiji nobleman dreamed of ~ the Romantic
Story of Nasunogahara's Pioneering~'

Here the video on YouTube



Nogi Shrine

It is a shrine built in the 5th year of Taisho to honor General Nogi and his wife.
Honden and Haiden are designated as a National Registered Tangible Cultural
Property in the first year of Reiwa.
There are Nogi Maresuke's villa and Takaramonokan in the site.
●TEL.0287-36-1194 (Nogi Shrine)

Goshuin choosable
from three



Homotsukan (Treasure Hall)

Many valuable keepsakes of General Nogi
and his wife are displayed.

●Entrance Fee/Adult 100yen

Nogi Maresuke's House in Nasuno

It is a simple farm-style villa designed by
Nogi Maresuke, a former army general.

※The inside of Villa is not open to the public



Oyama Sando

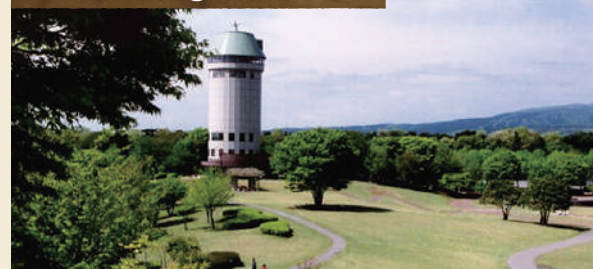
The path to the graveyard where Iwao Oyama, a veteran of Meiji era, is asleep.
Maple trees whose age is about 100 years old are also famous for a view point and reach the peak in mid to late November.

Senbonmatsu Farm



It is a representative of a large-scale farm, which is a tourist farm that you
can enjoy various experiences now. ●TEL.0287-36-1025

Nasunogahara Park



It is a verdant park where you can enjoy the scenery of Nasunogahara and Nasurenzan
Mountain. ●TEL.0287-36-1220 (Nasunogahara Park Management Office)

Oyama Villa (Oyama Memorial Museum)



A villa built inside the Oyama
Farm established by Oyama Iwao.
The area near the villa is now
'Oyama Farm' of Nasu Takuyo
High School, and if you want the
tour, the reservation is required
up to a week before.
(Every Monday, Wednesday and
Friday p.m.1:30~)

●TEL.0287-36-1225
(Nasutakuyo High School Office)

Karasugamori Park



It is a park on a low hill, and there is Karasumori Inari-jinja Shrine and a song monument of
Minamoto no Sanetomo on the hill. ●TEL.0287-36-6040 (City Park Management Office)

Nasu Sosui

Nasu Sosui, which led the pioneer
of Nasunogahara,
was registered as a 'World Irrigation
Facility Heritage' in 2017.
The water drawn from Nakagawa is still being
sent to the cultivated rice paddies.
(Filming location Aoki)



Nasunogahara Museum



It is a museum that introduces such as the history of pioneering, local people, archaeology, and nature.

●Opening Hours: 9:00~17:30 (Last admission is 16:30)
●Days Closed: Every Monday (Closed the following day for public holidays), December 29th-January 3rd
●Entrance Fee: Adult 300yen, High school-College student 200yen Elementary-Middle school student 100yen
●TEL.0287-36-0949

There is also
one-half size model
of Nasu Sosui's
intake which is
4.5m high

Nasunogahara Map



There are as many as
500 cows!

If you visit to Nasushiobara!

Please Entertainmen in popular

enjoy the and Shopping places!!

Big Hits to locals, too!
You can enjoy all day long!

Senbonmatsu Farm

You can enjoy various experiences such as having a meal, shopping, and meeting animals in person at Senbonmatsu Farm where is a two-minute drive from Nishinasunoshiobara I.C. to Shiobara.

● Opening Hours: 9:00~18:00 ● TEL.0287-36-1025



Genghis Khan, a specialty

The popular menu that has been passed down for more than 50 years!
The secret sauce adds flavor.



Vaca dulce

Try it with the rich milk jam 'Vaca dulce' that was boiled for more than 4 hours.

Soft icecream, a specialty

It is made from fresh and delicious milk produced on the farm.



Animal Meeting
Square

Gift

They sell more than 1,000 products including dairy products with pride.



SENBONMATSU

Sosunosato Direct Sales Center



Nearby soba restaurant is
also popular!



They have a variety of vegetables harvested in every morning and sell them under the name of a local farmer.

● Opening Hours: 9:00~16:00
● TEL.0287-37-7768

Shiobara Monogatikan



They offer Shiobara's specialty and handmade souvenirs.

● Opening Hours: 8:30~18:00(open year round)
● TEL.0287-32-4000(Shiobara OnsenTourism Association)

Nasu Garden Outlet

A resort-style outlet mall gathering about 140 stores, which can even enjoy meeting nature and animals under the theme of local speciality.

● Opening Hours: 10:00~19:00(It may be changed depending on the season and day)
● TEL.0287-65-4999



Loco Style Mart

It is a market where you can enjoy the gifts of Nasu's nature, such as seasonal vegetables harvested by local farmers and desserts.



NASU
GARDEN OUTLET



Dog Run

There is a spacious space, so you can enjoy dog cafes, shops, etc. with your dog.

Winter Illumination

'Milky Way', which shines with royal blue color, is also popular as a photo spot.



Nasushiobara City's specialty, Dairy products

Number.1 in producing of
raw milk in Honshu

Nasushiobara City, Number.1 in producing of raw milk in Japan, has numerous farms, so you can have fresh and delicious dairy products such as milk and cheese!



The cheese workshop Nasunomori 'Morino Cheese'

Won the Super Gold Medal at the World Cheese Awards 2019 which is the world's most prestigious cheese competition!

This is the first success of cheese made from Japan.

● TEL.0287-73-5420

We recommend other gifts like this♪ NASU WINE Watanabe Vineyard Brewing

A local winery, which have been constantly manufacturing for 120 years since its foundation in 1884. It is known as General Nogi Maresuke loved it.

● TEL.0287-62-0548



Shiobara Sennihiyakunen Monogatari

They have original shochu and local beer made from Shiobara Onsen water!

● TEL.0287-32-2337



Cheese Garden



Give a present the
best cheesecake♪

They have a variety of snacks and black tea including the popular 'Royal House Cheesecake'.



Cheese Garden THE OVEN

● Opening Hours: 9:00~18:00 ● TEL.0287-35-4609

Cheese Garden Shiobara Coffee

● Opening Hours: 9:00~18:00 ● TEL.0287-35-3555

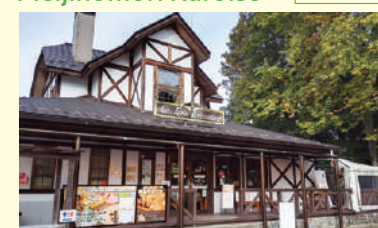
Cheese Garden Nasu Garden Outlet branc

● Opening Hours: 10:00~19:00 ● TEL.0287-65-9106
※It is following the Opening Hours of Nasu Garden Outlet.

Michino Eki

Meijinomori Kuroiso

Relax surrounded by abundant nature



Full of pulp♪
The best
selling products
with pride
Big hit!
Strawberry
Gelato

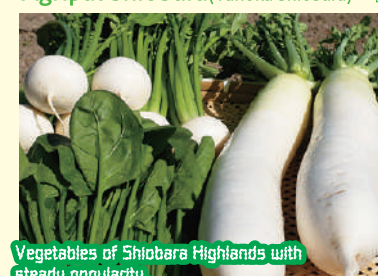


Located the old Aoki Family's Nasu Villa, the farm market is full of fresh vegetables and specialties! Farm Restaurant & Ice Workshop 'Aokinomori-Cafe' and Bread workshop is also located.

● Opening Hours: [Farm Market] 8:30~17:30(Close at 16:30 from November to February)
[Restaurant-Bread workshop] 9:00~18:00(Close at 16:30 from October to March)
● TEL.0287-63-0399

Agripal Shiobara(Yunoka Shiobara)

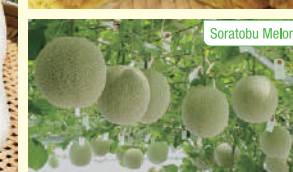
Enjoy homemade local
specialty foods.!



Vegetables of Shiobara Highlands with
steady popularity.



Dried radish Manju



Soratobu Melon

There is a farmers' market, a rural restaurant, and a bread workshop.

Agripal Shiobara produces hydroponic melons which is rare in Japan.

● Opening Hours: 9:00~17:00(Close at 16:00 from December to February) ● TEL.0287-35-4401

Have a fresh strawberry & milk dessert ♪

Limited Period

Enjoy fully Nasushiobara with strawberry and milk dessert!

Strawberry and Milk Fair

You can enjoy a variety of original sweets using strawberries and milk, representing Nasushiobara City ♪



Strawberry milk smoothie
A bag 100yen
10 bags in a box 1,000yen
(tax not included)

Shiobara Onsen Itamuro Onsen Lip cream
500yen
(tax not included)

Bread Can the Original Label
500yen
(tax not included)

Strawberry and Milk Fair's Original produ

Limited Period

Strawberry Harvest Experience

You can have the best breakfast with 'selected one-dish meal'

~There is a story as much as type of breakfast~

One-dish meal of breakfast's story

Please enjoy the breakfast which made by thinking carefully such as local ingredients, spices, and recipes!



Taste delicious local liquor with comparing ♪

~Tochigi local liquor tasting event~
Have yourself the liquor filled with pride!

Nasushiobara Chishumonogatari

The participating stores in Nasushiobara City give you a selection of folk liquor for free.
Enjoy Tochigi's proud folk liquor ♪



Rearrange meals of Soldiers to Modern style ♪

Limited Period

A masterpiece which can taste the gift of Nasuno's nature

Makikarinabe Fair

A famous dish named 'Makikari cuisine' is came from Minamoto no Yoritomo's hunting in Nasunogahara.
You can enjoy it depending on each store's characteristics.



Plentiful in Nasushiobara City!

Delicious Bakery

Nasushiobara City, where dairy industry has developed, has many bakeries loved by tourists and locals.
There are places running with cafe, so try it with freshly baked bread!

Yakisoba with soup

It looks like Ramen, but it tastes Yakisoba, which is a B-list specialty food!
It is so exquisite due to the harmony of noodles with sauce and soup based on soy sauce.

Kamahiko ●TEL.0287-32-2560
Kobaya Shokudo ●TEL.0287-32-2371

Nasunogoyoran Omelet

Selected Otawara eggs, which is full of sweetness and flavor, covers softly.

Inside the Shiobara Monogatari Café Restaurant Lamp
●TEL.0287-32-4000

Toteyaki

The original ingredients of each store are put in thin sponge dough which is baked.
The original ingredients of each store are put in thin sponge dough which is baked.

What is Totebasha?
It is a carriage that used to play an important role as a means of transportation in the past, you can take a look around the village riding on it.

Onsen Manju

The representative gift of Onsen 'Onsen Manju'.
Colors, flavors, and sizes vary depending on the store!

Handmade Soba

Scented homemade soba with high quality Japanese buckwheat flour.
Especially, Juwarisoba made of freshly ground buckwheat flour is outstanding.

You can get the special tastes only here!

Nasushiobara Specialty

Nasushiobara Specialty Gourmet

Try a harvest experience in the Kingdom of Strawberry where is Japan's No. 1 in the strawberry crop ♪

Hana Kazoku
●TEL.0287-35-2144

Ichigo Land
●TEL.080-1080-5910

Senbonmatsu Farm
●TEL.080-7719-1515

※Reservation first